

Mill Creek

Alternatives Analysis and Design

UPDATE #3

February 2025

OVERVIEW

South Skagit Highway, a Skagit County owned road, travels along the South side of the Skagit River and crosses over Mill Creek near milepost 18. This section of roadway is within the floodplain of the Skagit River and the alluvial fans of Mill and Savage Creeks resulting in routine flooding and damage to the road. The clearance under the Mill Creek bridge is too small for sediment transport and the Savage Creek culvert is a partial barrier to fish passage. The County began working on this project in 2004 with a sediment and flood management report. In partnership with the Skagit River System Cooperative an alternatives analysis was completed in 2015. The County is currently assessing various alternatives to improve the road and fish passage/habitat in this area.

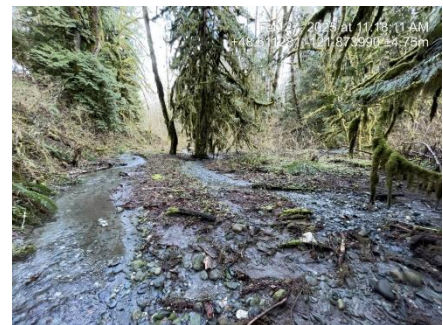
This phase of work is expected to be completed December 2025.

A detailed history of the project and all previous updates can be found on the Mill Creek website which is located at:

<https://www.skagitcounty.net/Departments/PublicWorksSurfaceWaterManagement/MillCreekFeasibilityStudy.htm>

UPDATES

- *Funding –*
 - Skagit County successfully submitted an application to the NOAA's Restoring Fish Passage through Barrier Removal grant. We intend to apply for NOAA's Transformational Habitat grant and the Federal Local Bridge Program Grant both due in April.
- *Outreach and Communication–*
 - A successful site visit occurred on February 27th. Skagit County staff, neighboring landowners, a handful of interested parties, and the consultant team walked the proposed alignment. It was educational and informational! The photo to the right is of Savage Creek at the proposed crossing location.
 - Skagit County staff presented the conceptual designs to the County Commissioners for feedback on February 24th. This can be found on the County's website here: https://skaqit.granicus.com/MediaPlayer.php?view_id=8&clip_id=4758&meta_id=255957



- *Design* –
 - KPFF and their subs have worked very hard to complete all required submittals for the NOAA grant including conceptual designs of each proposed bridge crossing. They are now working on the Design Report and items for the upcoming grant applications.

UPCOMING

Staff will continue discussions with affected and interested parties.

KPFF and subs will work towards completion of the Basis of Design Report.

County staff will continue to seek design and eventual construction funding.